

( )

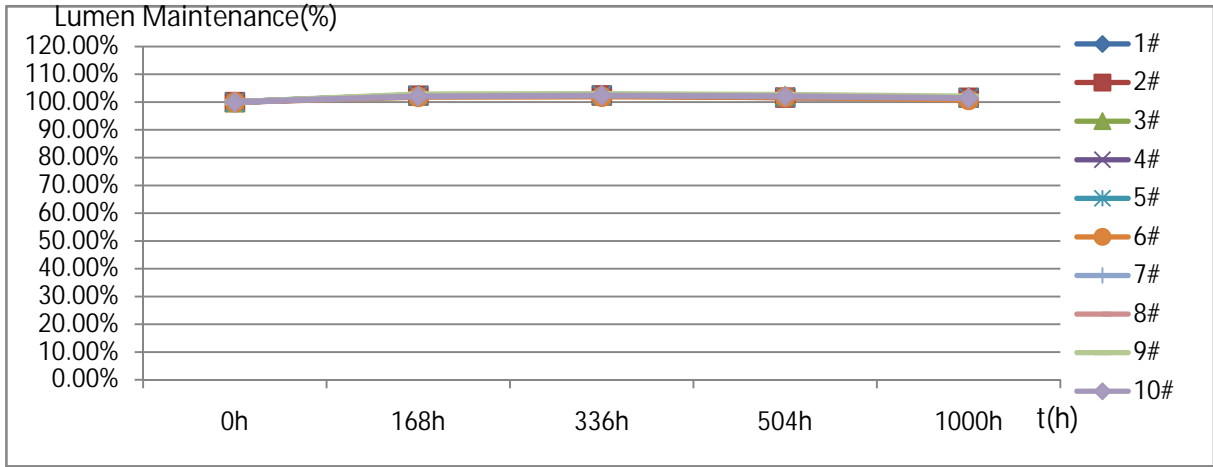
: LAB0203007-19

1

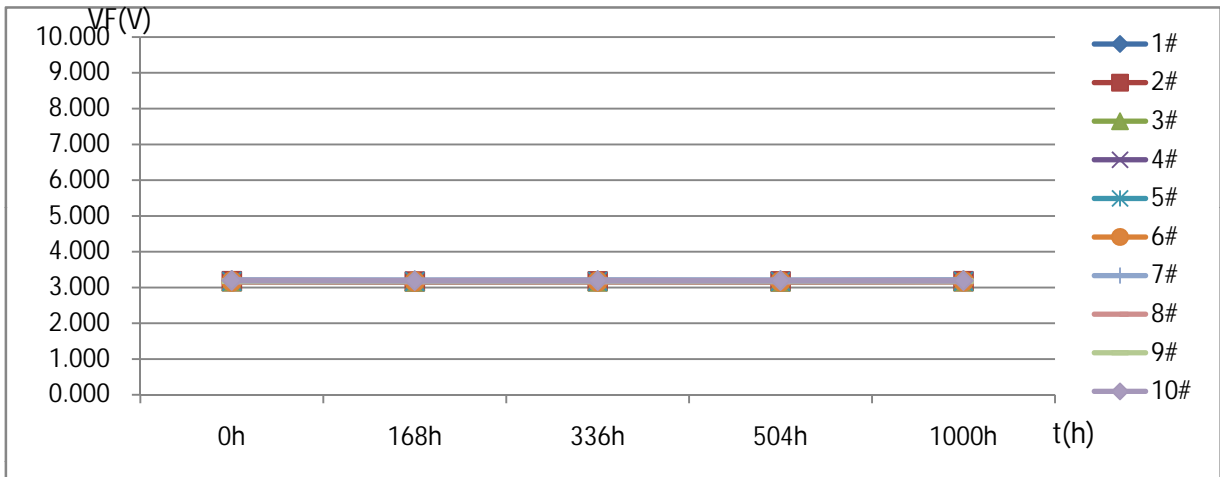
5

1 : EMC /  
 2 : 1# 10#  
 3 / : RF- VMH 32DS- FF- J/SC17- 20010401C  
 4 : 2020 03 05 2020 04 16  
 5 LED (SZ12112454) HAAS- 1200 (G113724CS1321116)  
 FLUKE (34700492MS) (N0842010) (TST1005028)  
 (MT 4X) DC POWER SUPPLY 020178731 DSX500 4B43960  
 6 : 22 28 30 70 %RH  
 7 : 2 B GB/T 2423 2- 2008  
 LED CIE127 2007  
 8  
 9 : 125 2H 1 SMT W- R00- 004  
 105 100CH 150mA 150mA  
 2 0h 168h 336h 504h 1000h

(1n)



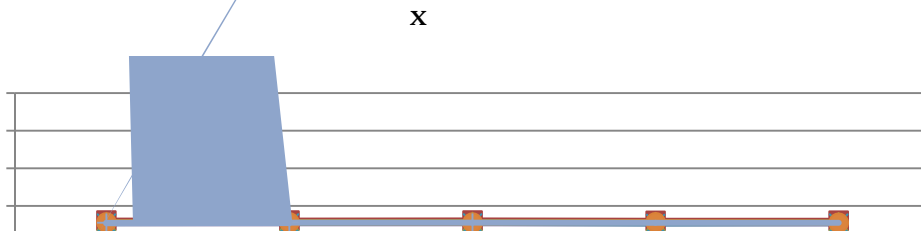
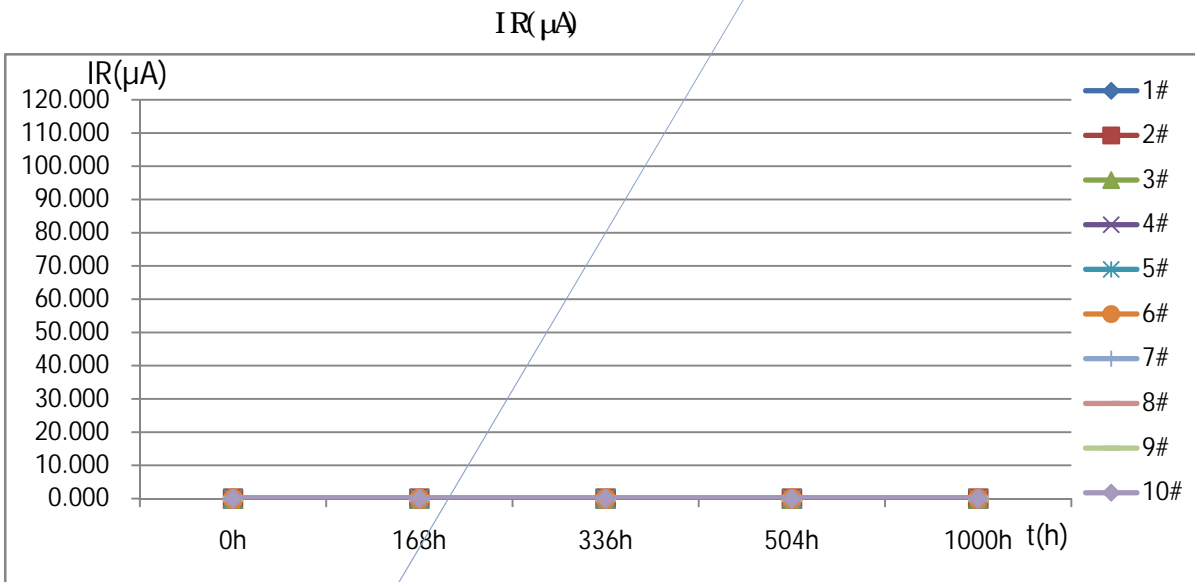
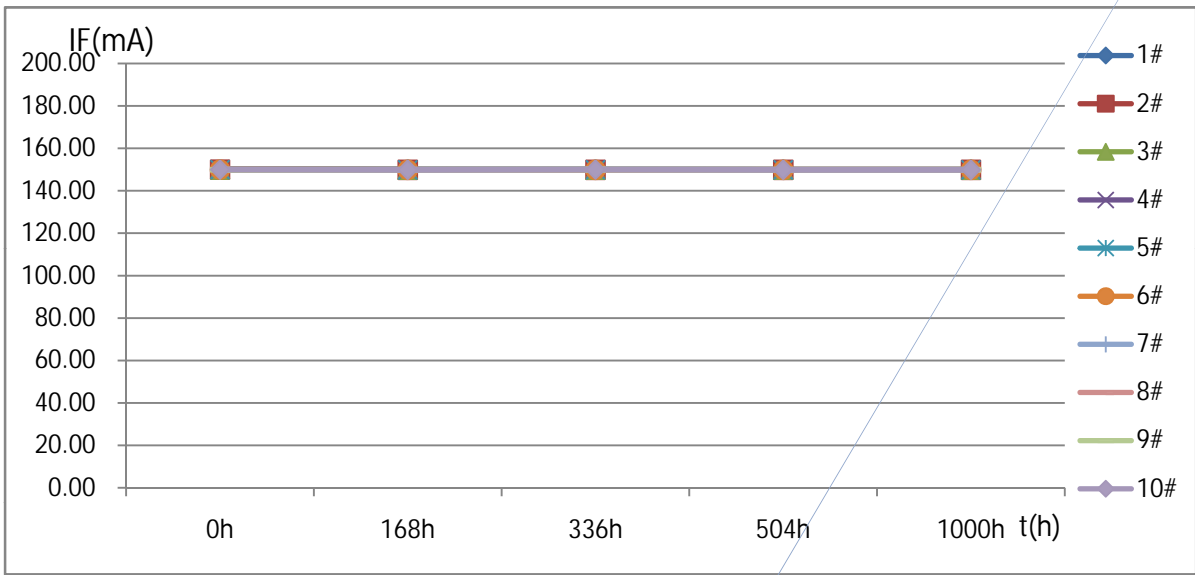
Vf(V)



: 黄凯 2020 04 19

: 樊考辉 2020 04 19

: 张列辉 2020 04 20



y



	IF(nA)				
	0h	168h	336h	504h	1000h
1#	150.00	150.00	149.90	149.90	149.90
2#	150.00	149.90	149.90	149.90	149.90
3#	150.00	149.90	149.90	149.90	149.90
4#	150.00	149.90	150.00	149.90	149.90
5#	150.00	149.90	149.90	149.90	149.90
6#	150.00	149.90	149.90	149.90	149.90
7#	149.90	149.90	150.00	149.90	149.90
8#	149.90	149.90	149.90	149.90	149.90
9#	149.90	149.90	150.00	149.90	149.90
10#	150.00	149.90	150.00	149.90	149.90

	IR( $\mu$ A)				
	0h	168h	336h	504h	1000h
1#	0.000	0.000	0.000	0.000	0.000
2#	0.000	0.000	0.000	0.000	0.000
3#	0.000	0.000	0.000	0.000	0.000
4#	0.000	0.000	0.000	0.000	0.000
5#	0.000	0.000	0.000	0.000	0.000
6#	0.000	0.000	0.000	0.000	0.000
7#	0.000	0.000	0.000	0.000	0.000
8#	0.000	0.000	0.000	0.000	0.000
9#	0.000	0.000	0.000	0.000	0.000
10#	0.000	0.000	0.000	0.000	0.000

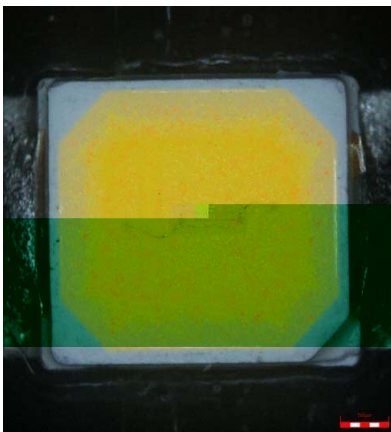
	x					x			
	0h	168h	336h	504h	1000h	168h	336h	504h	1000h
1#	0.3272	0.3275	0.3274	0.3271	0.3272	0.0003	0.0002	-0.0001	0.0000
2#	0.3305	0.3305	0.3306	0.3302	0.3303	0.0000	0.0001	-0.0003	-0.0002
3#	0.3282	0.3283	0.3284	0.3282	0.3280	0.0001	0.0002	0.0000	-0.0002
4#	0.3268	0.3269	0.3269	0.3267	0.3266	0.0001	0.0001	-0.0001	-0.0002
5#	0.3271	0.3273	0.3273	0.3266	0.3271	0.0002	0.0002	-0.0005	0.0000
6#	0.3281	0.3280	0.3278	0.3283	0.3276	-0.0001	-0.0003	0.0002	-0.0005
7#	0.3275	0.3276	0.3277	0.3274	0.3274	0.0001	0.0002	-0.0001	-0.0001
8#	0.3314	0.3315	0.3314	0.3311	0.3313	0.0001	0.0000	-0.0003	-0.0001
9#	0.3286	0.3288	0.3288	0.3285	0.3284	0.0002	0.0002	-0.0001	-0.0002
10#	0.3307	0.3308	0.3308	0.3305	0.3306	0.0001	0.0001	-0.0002	-0.0001

	y					y			
	0h	168h	336h	504h	1000h	168h	336h	504h	1000h
1#	0.3436	0.3445	0.3447	0.3442	0.3446	0.0009	0.0011	0.0006	0.0010
2#	0.3444	0.3449	0.3452	0.3445	0.3448	0.0005	0.0008	0.0001	0.0004
3#	0.3418	0.3426	0.3430	0.3427	0.3424	0.0008	0.0012	0.0009	0.0006
4#	0.3421	0.3429	0.3429	0.3427	0.3426	0.0008	0.0008	0.0006	0.0005
5#	0.3396	0.3405	0.3405	0.3397	0.3405	0.0009	0.0009	0.0001	0.0009
6#	0.3384	0.3387	0.3386	0.3392	0.3384	0.0003	0.0002	0.0008	0.0000
7#	0.3414	0.3423	0.3426	0.3421	0.3422	0.0009	0.0012	0.0007	0.0008
8#	0.3474	0.3482	0.3482	0.3478	0.3481	0.0008	0.0008	0.0004	0.0007
9#	0.3427	0.3435	0.3437	0.3432	0.3432	0.0008	0.0010	0.0005	0.0005
10#	0.3404	0.3410	0.3413	0.3410	0.3411	0.0006	0.0009	0.0006	0.0007

LEI

	min	max
Lucent Maintenance(%)	90%	110%
VF	-0.5	0.5
x	-0.01	0.01
y	-0.015	0.015
IR(μA)	/	10

1000h



.....